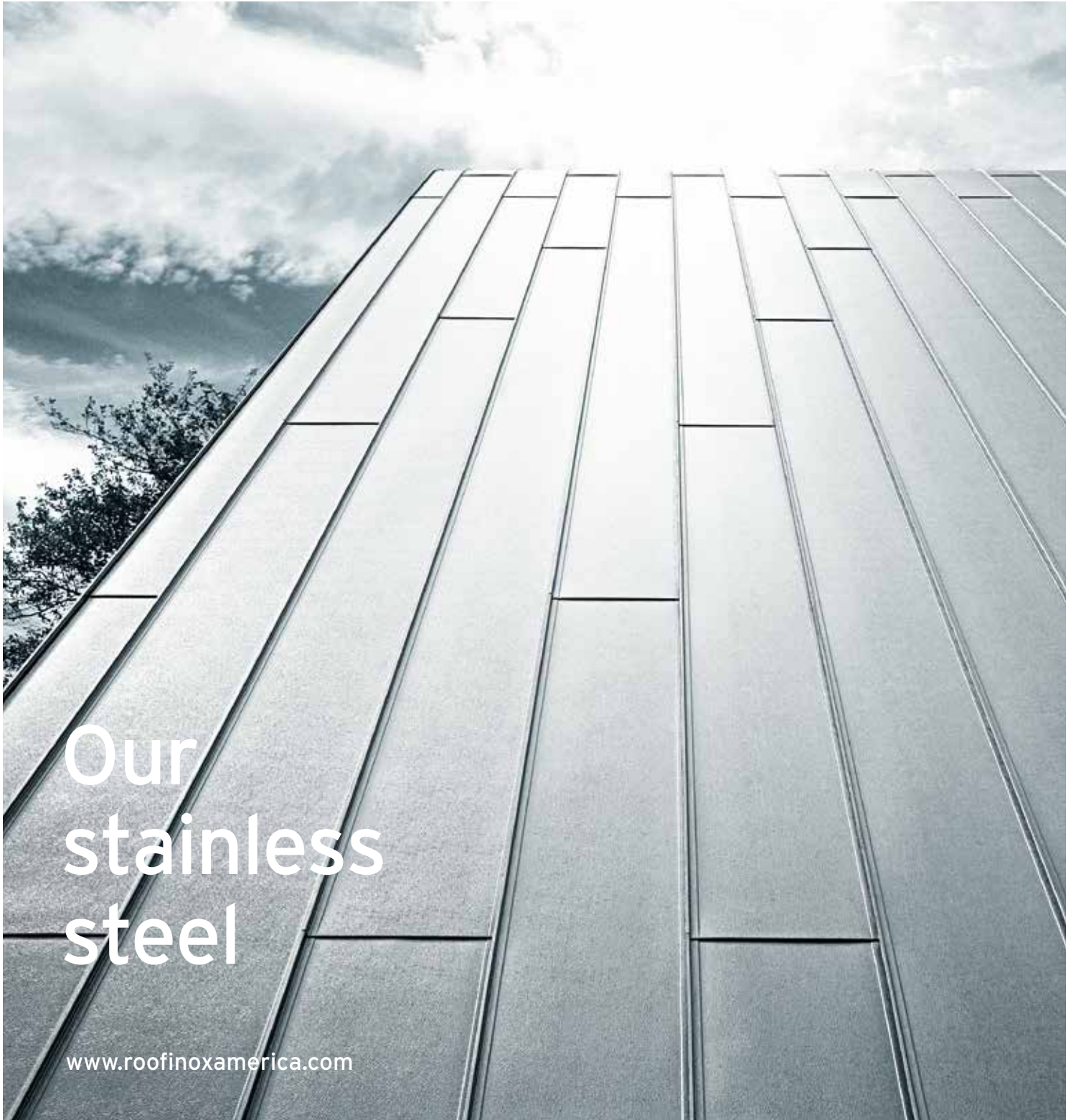


ROOFINOX[®]

Stainless like never before



Our
stainless
steel

www.roofinoxamerica.com

Our stainless steel

Your advantages at a glance

- Softer and easier to seam
- The mattest surfaces on the market
- Lowest possible reflection
- 100 % natural surfaces
- Easy cleaning of Roofinox Classic and Roofinox Plus .0157
- Excellent solderability
- Ideal colour to complement most building materials
- Long life because product is free from material erosion
- 100 % recyclable
- No problems with normal moisture caused by condensation
- Low maintenance
- Resistant to algae, plant roots, and air-borne pollutants
- Suitable for low roof pitches
- Formable in any weather and temperature
- Least active on the galvanic chart, can be combined with most other materials
- Lowest thermal expansion
- Suitable for both ventilated and non-ventilated roof designs



Roofinox Classic 304/316L

The brush-rolled stainless steel

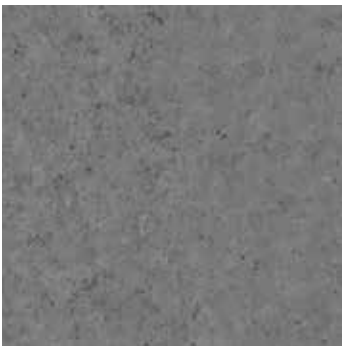
- Unique surface
- 20% softer
- 4 times as matt
- Lowest possible reflection
- 100% natural



Roofinox Plus .0157 304/316L

The ribbed stainless steel

- 20% cost saving
- Smoother appearance
- Mishaps less noticeable
- Less sensitive



Roofinox tin-plated (Terne) 439/316L

The tin-plated stainless steel

- Acquires a patina
- Elegant tin grey surface
- Ideal for all roof types
- 100% recyclable

COIL-WIDTH

Roofinox Classic 304/316L		19.7		24.6		39.4		49.2	
		304	316L	304	316L	304	316L	304	316L
GAUGES	.0157	●	●	●	●	●	●	●	●
	.0197	●	●	●	●	●	●	●	●
	.0236	●	●	●	●	●	●	●	●
	.0315	●	●	●	●	●	●	●	●

COIL-WIDTH

Roofinox Plus 304/316L		19.7		23.6		39.4		47.2	
		304	316L	304	316L	304	316L	304	316L
GAUGES	.0157	●	●	●	●	●	●	●	●

COIL-WIDTH

Roofinox tin-plated 439/316L		19.7			24.6			39.4			49.2		
		439	304	316L	439	304	316L	439	304	316L	439	304	316L
GAUGES	.0197	●	●	●	●	●	●	●	●	●	●	●	●

● available on stock ● delivery time of 6 weeks ● upon request (minimum quantity)

Roofinox America Inc., PO Box 240, Eatontown, NJ 07724
T 732 440 8069, sales@roofinox.com

www.roofinoxamerica.com

